

JET

BD-8A
BD-8

METAL LATHE

BD-8A-M...50000085MA.....1~230V,50Hz

BD-8-M ...50000085M.....1~230V,50Hz

PARTS LIST

JPW (Tool) AG

Tämperlistrasse 5

CH-8117 Fällanden

Switzerland

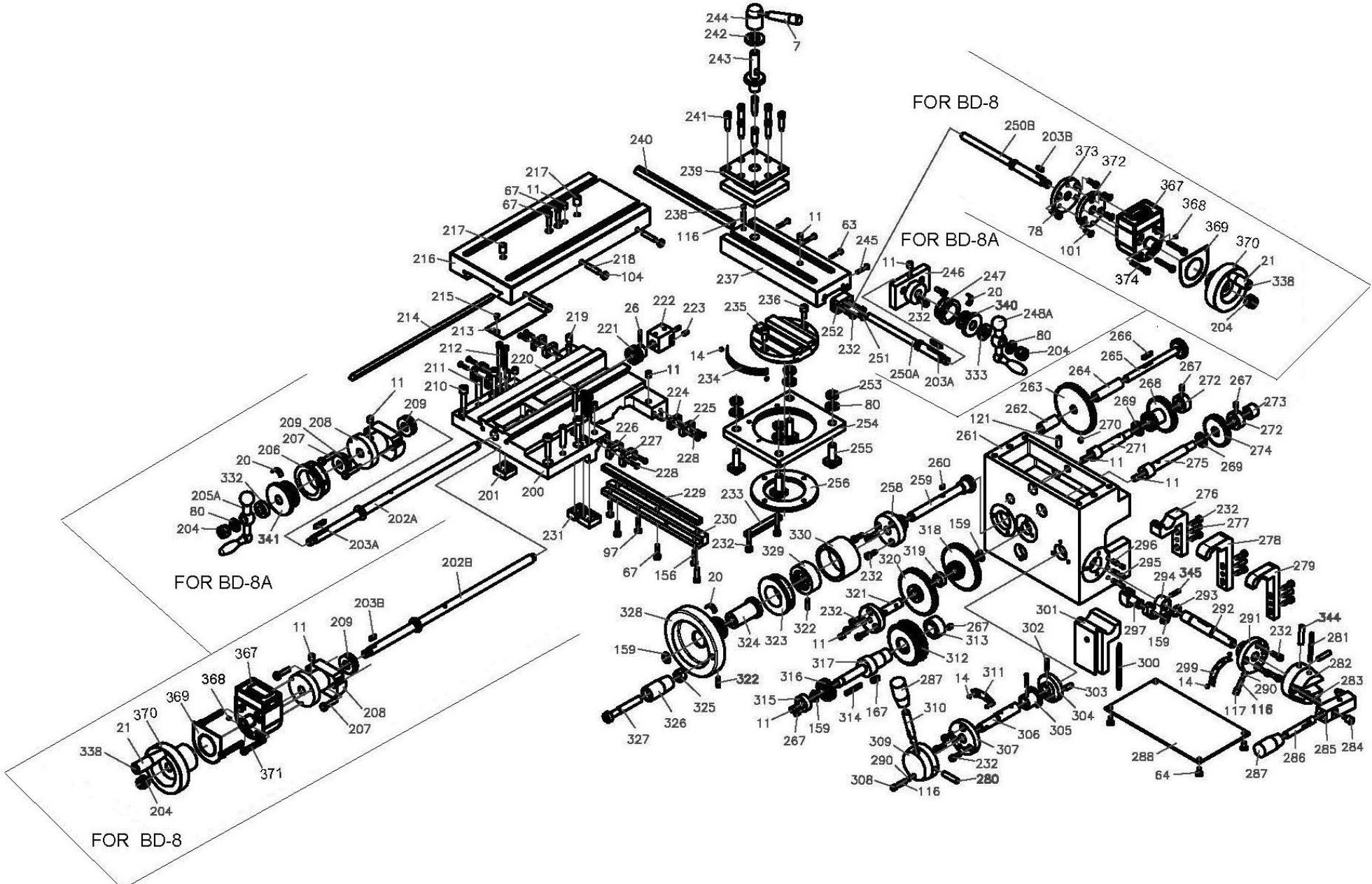
Phone +41 44 806 47 48

Fax +41 44 806 47 58

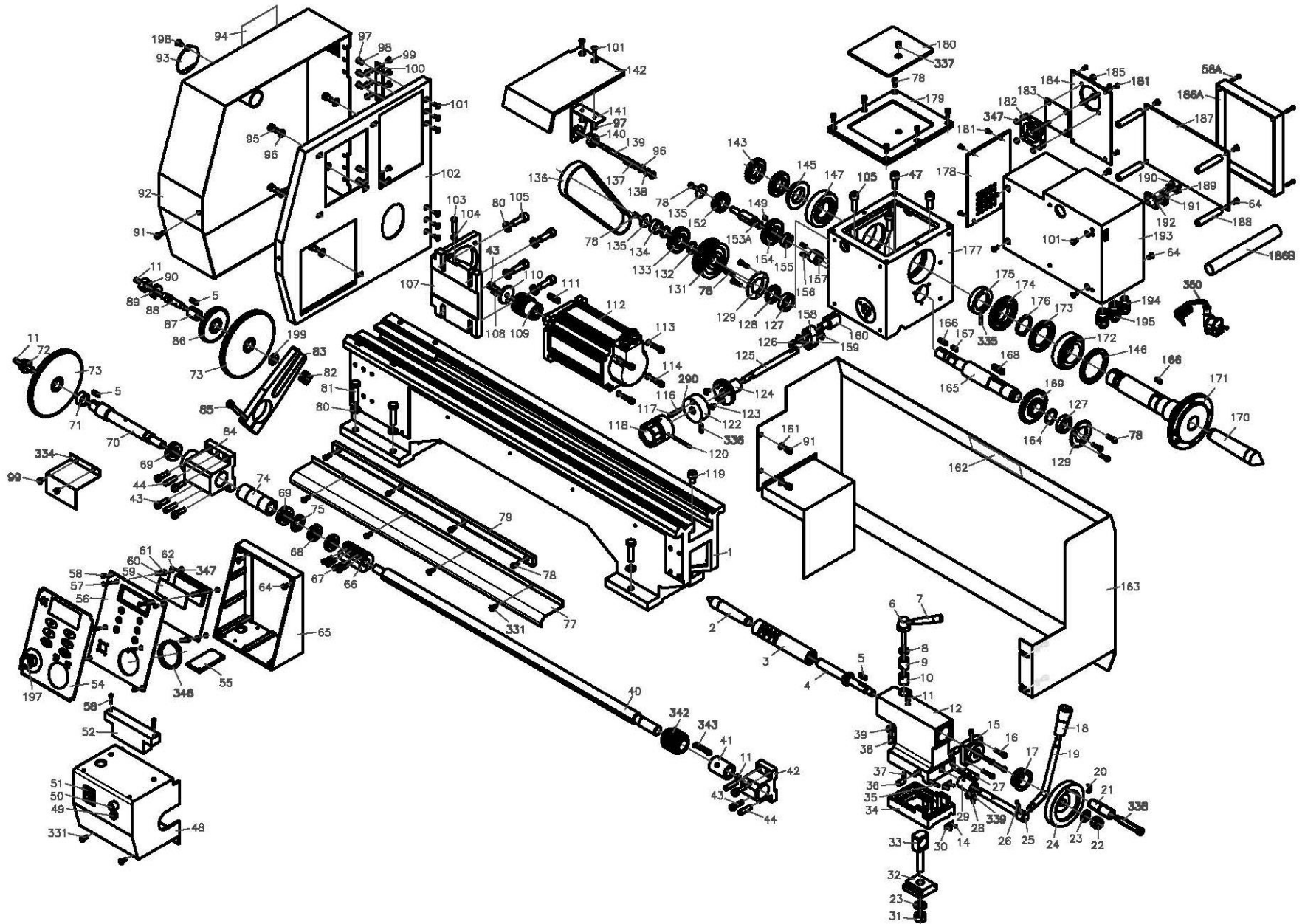
www.jettools.com



Parts Breakdown For BD-8A / BD-8 Metal Lathe



Parts Breakdown For BD-8A / BD-8 Metal Lathe



Part List for BD-8A / BD-8 Metal Lathe

No.	Part no.	Descirption	Size	Qty.
1	BD8-001	bed way		1
2	BD8-002	tailstock center		1
3	BD8-003	tailstock sleeve	M6X14	1
4	BD8-004	lead screw		1
5	BD8-005	key	4X6	3
6	BD8-006	lock shaft		1
7	BD8-007	knob		2
8	BD8-008	adjust washer		1
9	BD8-009	lock sleeve		1
10	BD8-010	lock nut		1
11	BD8-011	oil cup		17
12	BD8-012	tailstock casting		1
13	BD8-013	scale lable	6	3
		cancel		
14	BD8-014	rivet		10
15	BD8-015	lead screw support		1
16	BD8-016	screw	M4X20	4
17	BD8-017	dial		1
18	BD8-018	handle	M8X40	1
19	BD8-019	knob		1
20	BD8-020	spring		4
21	BD8-021	long handle		1
22	BD8-022	lock nut	M10	1
23	BD8-023	washer	10	2
24	BD8-024	handle wheel		1
25	BD8-025	rotating shaft		1
26	BD8-026	pin	3X16	2
27	BD8-027	limit shank		1
28	BD8-028	pin	3X20	1
29	BD8-029	eccentric sleeve		1
30	BD8-030	zero position lable		2
31	BD8-031	nut	M10	1
32	BD8-032	tailstock clamp plate		1
33	BD8-033	lock bolt		1
34	BD8-034	stand		1
35	BD8-035	screw	M4X12	2
36	BD8-036	screw	M8X14	2
37	BD8-037	screw	M4X10	1
38	BD8-038	screw	M6X16	1
39	BD8-039	nut	M6	1
40	BD8-040	lead screw		1
41	BD8-041	copper bush II		1
42	BD8-042	bracket		1
43	BD8-043	screw	M6X16	7
44	BD8-044	pin	6X26	4
45	BD8-045	chip tray (optional parts)		1
46	BD8-046	rubber foot (optional parts)		4
		cancel		
47	BD8-047	screw	M8X20	2

Part List for BD-8A / BD-8 Metal Lathe

No.	Part no.	Description	Size	Qty.
48	BD8-048	protecting cover of bracket		1
49	BD8-049	green lamp (HL)		1
50	BD8-050	fuse (FU)		1
51	BD8-051	switch (SA)		1
52	BD8-052	electric EMC filter (Z)		1
53	BD8-053	screw series # 12120906 and down		2
		cancel series # 12120907 and up		
54	BD8-054	switch film series # 13061262 and down		1
	BD8-054A	switch film series #13091263 and up		1
55	BD8-055	Fan power panel		1
56	BD8-056	switch label series #13061262 and down		1
	BD8-056A	switch label series #13091263 and up		1
57	BD8-057	screw	M3X20	4
58	BD8-058	Tapping screw	ST2.9x25	6
58A	BD8-058A	Tapping screw	ST2.9x25	4
59	BD8-059	digital readout guard		1
60	BD8-060	compression spring	0.7X4.5X7	4
61	BD8-061	Spacer bushing		4
62	BD8-062	pc board for keyboard (AP2)		1
63	BD8-063	nut	M3	4
64	BD8-064	screw	M4X8	14
65	BD8-065	control box		1
66	BD8-066	joint sleeve of leadscrew		1
67	BD8-067	screw	M4X16	9
68	BD8-068	nut	M16X1.5	2
69	BD8-069	ball bearing series # 12120906 and down	8103	2
	BD8-069A	ball bearing series #12120907 and up	51103	2
70	BD8-070	leadscrew connecting shaft		1
71	BD8-071	thick washer		1
72	BD8-072	bolt		1
73	BD8-073	change gear	120 teeth	2
74	BD8-074	copper bush I		1
75	BD8-075	washer		1
76	BD8-076	lock washer series #12120906 and down	16X22	1
		cancel series # 12120907 and up		
77	BD8-077	protecting cover of lead		1
78	BD8-078	screw	M4X10	18
79	BD8-079	rack		1
80	BD8-080	washer	8	14
81	BD8-081	bolt	M8X35	6
82	BD8-082	square nut		1
83	BD8-083	support plate		1
84	BD8-084	bracket		1
85	BD8-085	bolt series #12120906 and down	M8X30	1
	BD8-085A	bolt series series # 12120907 and up	M6X35	1
86	BD8-086	change gear	60 teeth	1
87	BD8-087	bearing		1
88	BD8-088	bolt		1
89	BD8-089	open washer		1

Part List for BD-8A / BD-8 Metal Lathe

No.	Part no.	Description	Size	Qty.
90	BD8-090	nut	M12	1
91	BD8-091	screw	M5X8	5
92	BD8-092	gear box cover		1
93	BD8-093	small cover		1
94	BD8-094	thread and feeding table		1
95	BD8-095	screw	M6X10	5
96	BD8-096	washer	6	6
97	BD8-097	nut	M4	11
98	BD8-098	spring washer	M4	6
99	BD8-099	screw	M4X6	8
100	BD8-100	hinge	62X33	2
101	BD8-101	screw	M4X10	12
102	BD8-102	rear plate of gear box cover		1
103	BD8-103	bolt	M5X25	1
104	BD8-104	nut	M5	4
105	BD8-105	screw	M8X25	6
106	BD8-106	screw series #12120906 and down	M6X16	1
		cancel series #12120907 and up		
107	BD8-107	motor support		1
108	BD8-108	pin	3X10	1
109	BD8-109	pulley		1
110	BD8-110	washer		1
111	BD8-111	key	5X25	1
112	BD8-112	brushless motor (M)		1
113	BD8-113	spring washer	5	4
114	BD8-114	screw	M5X20	4
115	BD8-115	steel ball series# 12120906 and down	4	1
		cancel series #12120907 and up		
116	BD8-116	compression spring	0.8X4X12	4
117	BD8-117	screw series# 12120906 and down	M6X8	2
	BD8-117A	screw series# 12120907 and up	M6X6	2
118	BD8-118	knob		1
119	BD8-119	screw	M8X12	1
120	BD8-120	pin	3X40	1
121	BD8-121	screw	M5X16	1
122	BD8-122	finding dial		1
123	BD8-123	screw	M4X8	3
124	BD8-124	finding sleeve		1
125	BD8-125	small shaft		1
126	BD8-126	key	4X14	1
127	BD8-127	bearing	61903-2Z	2
128	BD8-128	spacer		1
129	BD8-129	cover		2
130	BD8-130	washer series# 12120906 and down	4	6
		cancel series #12120907 and up		
131	BD8-131	spindle pulley		1
132	BD8-132	check ring	16	2
133	BD8-133	gear		1
134	BD8-134	washer		1

Part List for BD-8A / BD-8 Metal Lathe

No.	Part no.	Description	Size	Qty.
135	BD8-135	check ring		2
136	BD8-136	timing belt		1
137	BD8-137	compression spring		1
138	BD8-138	nut	M6	2
139	BD8-139	small shaft		1
140	BD8-140	damp sleeve		1
141	BD8-141	splash guard support		1
142	BD8-142	guard		1
143	BD8-143	nut	M27X1.5	2
144	BD8-144	lock washer series# 12120906 and down	27X37	1
		cancel series #12120907 and up		
145	BD8-145	spacer		1
146	BD8-146	oil ring		2
147	BD8-147	bearing	6206-2RZ	1
148	BD8-148	oil ring Series# 12120906 and down		1
		cancel Series# 12120907 and up		
149	BD8-149	key	4X8	1
150	BD8-150	pin Series# 12120906 and down		1
		cancel Series# 12120907 and up		
151	BD8-151	spindle bolt Series# 12120906 and down		1
		cancel Series# 12120907 and up		
152	BD8-152	gear	30T	1
153A	BD8-153	intermediate shaft Series# 12120906 and down		1
	BD8-153A	intermediate shaft Series# 12120907 and up		1
154	BD8-154	gear		1
155	BD8-155	bearing	608-Z	1
156	BD8-156	screw	M4X12	5
157	BD8-157	inlay block		1
158	BD8-158	shifting arm		1
159	BD8-159	check ring	10	6
160	BD8-160	shifting block		1
161	BD8-161	washer	5	4
162	BD8-162	safety lable		1
163	BD8-163	rear splash guard		1
164	BD8-164	ring	21	1
165	BD8-165	H/L gear shaft		1
166	BD8-166	key	4X18	2
167	BD8-167	key	4*X2	2
168	BD8-168	key	6X25	1
169	BD8-169	H/L gear		1
170	BD8-170	spindle center		1
171	BD8-171	spindle		1
172	BD8-172	bearing	32007	1
173	BD8-173	oil ring		1
174	BD8-174	spindle gear		1
175	BD8-175	spacer		1
176	BD8-176	check ring	30	1

Part List for BD-8A / BD-8 Metal Lathe

No.	Part no.	Description	Size	Qty.
177	BD8-177	head stock body		1
178	BD8-178	cover of electric box		1
179	BD8-179	cover		1
180	BD8-180	rubber		1
181	BD8-181	screw	ST2.9X9.5	8
182	BD8-182	small fan		1
183	BD8-183	protect mesh		1
184	BD8-184	small cover of electric box		1
185	BD8-185	screw series# 12120906 and down	M4X16	4
	BD8-185A	screw Series #12120907 and up	M3X14	4
186A	BD8-186A	big cover of electric box		1
186B	BD8-186B	Plastic pipe		1
187	BD8-187	pc main circuit board (AP1)		1
188	BD8-188	stepping		4
189	BD8-189	screw Series #12120906 and dow	M2X10	2
	BD8-189A	screw Series #12120907 and up	ST2.2X9.5	2
190	BD8-190	screw	M4X12	2
191	BD8-191	micro switch for chuck guard(SQ)		1
192	BD8-192	bottom plate of micro switch		1
193	BD8-193	electric box		1
194	BD8-194	lock connect	M12	1
195	BD8-195	lock connect	M16	2
196	BD8-196	connection pole Series #12120906 and down		1
		cancel Series #12120907 and up		
197	BD8-197	emergency stop switch (SB) series#13061262 and down		1
	BD8-197A	emergency stop switch (SB) series#13091263 and UP		1
198	BD8-198	screw	M5X8	1
199	BD8-199	washer		1
200	BD8-200	saddle		1
201	BD8-201	front clamp		2
202A	BD8-202A	lead screw FOR BD-8A		1
202B	BD8-202B	lead screw for BD-8		1
203	BD8-203	key Series #12120906 and down	3X10	2
203A	BD8-203A	key for BD-8A Series #12120907 and up	3X20	2
203B	BD8-203B	key for BD-8	3X8	2
204	BD8-204	lock nut	M8	2
205A	BD8-205	handle wheel for BD-8A		1
206	BD8-206	dial		1
	50000092	Digital read out kit (Set of 2 pieces)		1
207	BD8-207	bolt	M5*20	2
208	BD8-208	bearing seat		1
209	BD8-209	bearing Series #12120906 and down	8100	2
	BD8-209A	bearing Series #12120907 and up	51100	2
210	BD8-210	screw	M6X25	4
211	BD8-211	pin	6X30	2
212	BD8-212	screw	M4X30	4

Part List for BD-8A / BD-8 Metal Lathe

No.	Part no.	Description	Size	Qty.
213	BD8-213	cover		1
214	BD8-214	gib strip		1
215	BD8-215	screw	M3X6	1
216	BD8-216	cross slide		1
217	BD8-217	screw	M8X12	2
218	BD8-218	screw Series #12120906 and down	M5X25	3
	BD8-218A	screw Series #12120907 and up	M5X3	3
219	BD8-219	screw	M6X10	2
220	BD8-220	screw	M5X30	4
221	BD8-221	gear		1
222	BD8-222	nut		1
223	BD8-223	screw	M4X8	2
224	BD8-224	oil-stopping felt		2
225	BD8-225	protecting panel		2
226	BD8-226	oil-stopping felt		2
227	BD8-227	protecting panel		2
228	BD8-228	screw	M3X12	8
229	BD8-229	gib strip		1
230	BD8-230	rear clamp		1
231	BD8-231	rear clamp		1
232	BD8-232	screw	M4X12	24
233	BD8-233	finding block		1
234	BD8-234	angle ruler		1
235	BD8-235	cutter rest revolving dial		1
236	BD8-236	screw	M5X12	2
237	BD8-237	compound rest		1
238	BD8-238	positing pin		1
239	BD8-239	tool rest		1
240	BD8-240	gib strip		1
241	BD8-241	screw	M6X20	8
242	BD8-242	adjusting washer		1
243	BD8-243	fuselage		1
244	BD8-244	clamping lever		1
245	BD8-245	screw Series #12120906 and down	M3X12	4
	BD8-245A	screw Series #12120907 and up	M3X16	4
246	BD8-246	leadscrew support		1
247	BD8-247	dial		1
248A	BD8-248	handle wheel For BD-8A		1
249	BD8-249	knob Series #12120906 and down	M6X32	1
		cancel Series #12120907 and up		
250A	BD8-250A	lead screw For BD-8A		1
250B	BD8-250B	lead screw For BD-8		
251	BD8-251	screw	M3x8	1
252	BD8-252	nut		1
253	BD8-253	nut	M8	4
254	BD8-254	stand		1
255	BD8-255	T bolt		4
256	BD8-256	rotating clamp		1

Part List for BD-8A / BD-8 Metal Lathe

No.	Part no.	Description	Size	Qty.
257	BD8-257	label Series #12120906 and down		1
		cancel Series #12120907 and up		
258	BD8-258	shaft I sleeve		1
259	BD8-259	shaft I gear shaft		1
260	BD8-260	key	3x6	1
261	BD8-261	apron		1
262	BD8-262	shaft II sleeve I		1
263	BD8-263	shaft II gear		1
264	BD8-264	shaft II sleeve II		1
265	BD8-265	shaft II gear shaft		1
266	BD8-266	key	3x16	1
267	BD8-267	screw Series #12120906 and down	M5x8	4
	BD8-267A	screw Series #12120907 and up	M5x6	4
268	BD8-268	H/L gear of shaft V		1
269	BD8-269	washer		2
270	BD8-270	screw	M4x6	1
271	BD8-271	shaft V		1
272	BD8-272	ring	10	2
273	BD8-273	shaft sleeve		1
274	BD8-274	shaft IV gear		1
275	BD8-275	shaft IV		1
276	BD8-276	leadscrew support		1
277	BD8-277	pin	4x16	3
278	BD8-278	leadscrew supporting clasp II		1
279	BD8-279	leadscrew supporting clasp I		1
280	BD8-280	pin Series #12120906 and down	4x45	2
	BD8-280A	screw Series #12120907 and up	M6x20	2
281	BD8-281	pin	4x40	1
282	BD8-282	handle seat II		1
283	BD8-283	compression spring	0.8x5x30	1
284	BD8-284	finding screw		1
285	BD8-285	active handle block		1
286	BD8-286	handle shank		1
287	BD8-287	long handle sleeve	M8x40	2
288	BD8-288	apron bottom cover		1
289	BD8-289	Compression spring Series #12120906 and down	0.6x3.5x12	1
		cancel Series #12120907 and up		
290	BD8-290	steel ball	5	3
291	BD8-291	limit flange sleeve		1
292	BD8-292	shifting knob		1
293	BD8-293	check ring	12	1
294	BD8-294	shifting arm		1
295	BD8-295	screw	M4X6	3
296	BD8-296	screw	M4X8	3
297	BD8-297	shifting block		1
298	BD8-298	key Series #12120906 and down	3X8	1
		cancel Series #12120907 and up		
299	BD8-299	cross feeding lable		1

Part List for BD-8A / BD-8 Metal Lathe

No.	Part no.	Description	Size	Qty.
300	BD8-300	gib strip		1
301	BD8-301	half nut		1
302	BD8-302	pin	3X18	2
303	BD8-303	pin	5X12	1
304	BD8-304	shifting dial		1
305	BD8-305	lock wheel		1
306	BD8-306	shaft VII		1
307	BD8-307	finding flange sleeve		1
308	BD8-308	screw	M6X6	1
309	BD8-309	handle seat I		1
310	BD8-310	bolt		1
311	BD8-311	lable		1
312	BD8-312	worm wheel		1
313	BD8-313	shaft VI sleeve I		1
314	BD8-314	key	3X28	1
315	BD8-315	shaft VI sleeve II		1
316	BD8-316	H/L gear		1
317	BD8-317	shaft VI		1
318	BD8-318	shaft III H/L gear		1
319	BD8-319	spacer		1
320	BD8-320	shaft III gear		1
321	BD8-321	shaft III		1
322	BD8-322	screw	M4X14	1
323	BD8-323	dial		1
324	BD8-324	meshing gear of wheel		1
325	BD8-325	nut	M8	1
326	BD8-326	handle		1
327	BD8-327	screw	M8X55	1
328	BD8-328	handle wheel		1
329	BD8-329	inner gear sets		1
330	BD8-330	protecting sleeve		1
331	BD8-331	screw Series# 12120906 and down	M4X12	6
	BD8-331A	screw Series# 12120907 and down	M4X8	6
	50000916	3-jaw chuck dia 100mm w flange(option)		1
332	BD8-332	Change gear (option) Series #12120906 and down	85 teeth	1
	BD8-332A	Spacer Series #12120907 and up		1
333	BD8-333	Change gear (option) Series #12120906 and down	87 teeth	1
	BD8-333A	Spacer Series #12120907 and up		1
334	BD8-334	Change gear (option) Series #12120906 and down	90 teeth	1
	BD8-334A	Cover Series #12120907 and up		1
335	BD8-335	Change gear (option) Series #12120906 and down	94 teeth	1
	BD8-335A	Screw Series #12120907 and up	M6x5	2
336	BD8-336	Change gear Series #12120906 and down	35 teeth	1
	BD8-336A	Screw Series #12120907 and up	M5x18	1

Part List for BD-8A / BD-8 Metal Lathe

No.	Part no.	Description	Size	Qty.
337	BD8-337	Change gear Series #12120906 and down	40 teeth	1
	BD8-337A	Oil cup Series #12120907 and up		1
338	BD8-338	Change gear Series #12120906 and down	45 teeth	1
	BD8-338A	Bolt Series #12120907 and up		1
339	BD8-339	Change gear Series #12120906 and down	49 teeth	1
	BD8-339A	Screw Series #12120907 and up	M4x10	2
340	BD8-340	Change gear Series #12120906 and down	55 teeth	1
	BD8-340A	Position sleeve for scale ring Series #12120907 and up		1
341	BD8-341	Change gear Series #12120906 and down	56 teeth	1
	BD8-341A	Position sleeve for scale ring Series #12120907 and up		1
342	BD8-342	Change gear Series #12120906 and down	50 teeth	2
	BD8-342A	Worm Series #12120907 and up		1
343	BD8-343	Change gear Series #12120906 and down	70 teeth	1
	BD8-343A	Key Series #12120907 and up		1
344	BD8-344	Change gear Series #12120906 and down	80 teeth	1
	BD8-344A	Screw Series #12120907 and up	M5x20	2
345	BD8-345	Change gear Series #12120906 and down	100 teeth	2
	BD8-345A	pin Series #12120907 and up	3x16	1
346	BD8-346	Change gear Series #12120906 and down	127 teeth	1
	BD8-346A	Dust ring Series #12120907 and up		1
347	BD8-347	DIAL SET Series #12120906 and down		1
	BD8-347A	Hex nut Series #12120907 and up	M3	8
350	BD8-350	Power cord Series #12120907 and up		1
351	BD8-351	Change gear (option) Series #12120907 and up	85 teeth	1
352	BD8-352	Change gear (option) Series #12120907 and up	87 teeth	1
353	BD8-353	Change gear (option) Series #12120907 and up	90 teeth	1
354	BD8-354	Change gear (option) Series #12120907 and up	94 teeth	1
355	BD8-355	Change gear Series #12120907 and up	35 teeth	1
356	BD8-356	Change gear Series #12120907 and up	40 teeth	1
357	BD8-357	Change gear Series #12120907 and up	45 teeth	1
358	BD8-358	Change gear Series #12120907 and up	49 teeth	1
359	BD8-359	Change gear Series #12120907 and up	55 teeth	1
360	BD8-360	Change gear Series #12120907 and up	56 teeth	1
361	BD8-361	Change gear Series #12120907 and up	50 teeth	2
362	BD8-362	Change gear Series #12120907 and up	70 teeth	1
363	BD8-363	Change gear Series #12120907 and up	80 teeth	1
364	BD8-364	Change gear Series #12120907 and up	100 teeth	2
365	BD8-365	Change gear Series #12120907 and up	127 teeth	1
367	BD8-367	Digital readout box		2
368	BD8-368	Screw	M2x4	2
369	BD8-369	Lable		2
370	BD8-370	Hand wheel		2
371	BD8-371	Screw	M3x25	3

Part List for BD-8A / BD-8 Metal Lathe

No.	Part no.	Descirption	Size	Qty.
372	BD8-372	Connection board		1
373	BD8-373	Lead screw base		1
374	BD8-374	Screw	M3x20	3

BD-8A-M...5000085MA.....1~230V,50Hz

BD-8-M...5000085M.....1~230v,50Hz

